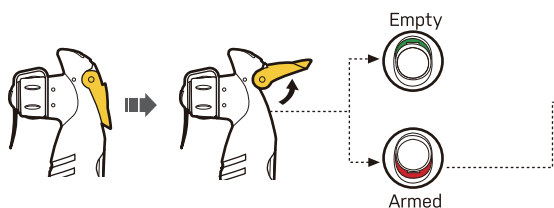


Important:
Use only Topeak 16g threaded CO₂ cartridges.
Use of other brand CO₂ cartridges can cause malfunction and will void warranty.

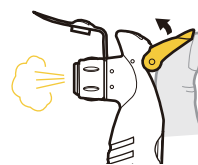
1. Dust Cap
2. Valve Stem Barrel
3. Inflator Head
4. 16g Threaded CO₂ Cartridge (included)
5. CO₂ Regulator Handle
6. Safety Ring
7. Pressure Indicator

HOW TO USE CO₂ CARTRIDGE

A. Check if CO₂ cartridge is empty or armed by flipping up CO₂ regulator handle to the position shown.

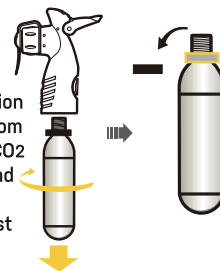


B. Inflate CO₂ cartridge by lifting CO₂ regulator handle as shown while indicator is in the red (armed) position.

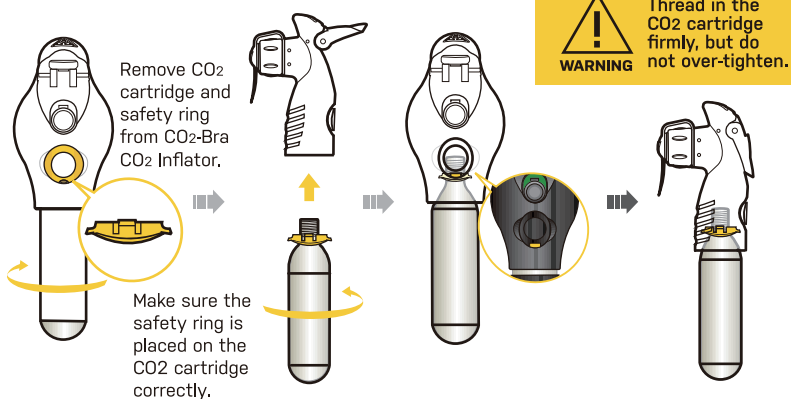


IMPORTANT NOTE

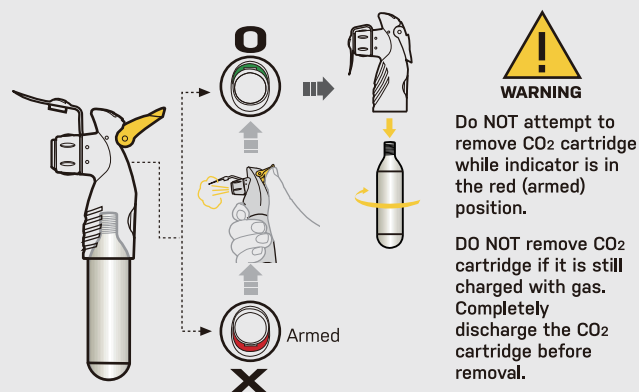
Remove compression washer from CO₂-Bra CO₂ inflator and discard before first use.



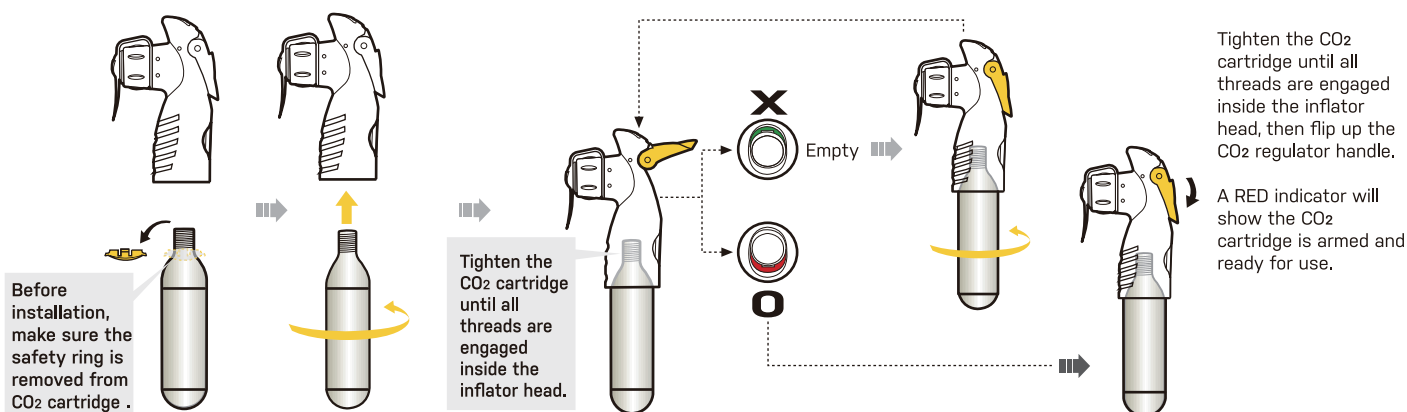
HOW TO STORE CO₂ CARTRIDGE



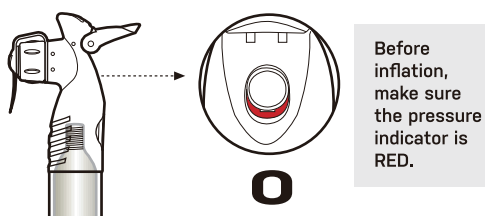
HOW TO REMOVE/REPLACE CO₂ CARTRIDGE



HOW TO INSTALL CO₂ CARTRIDGE



HOW TO INFLATE CO₂ CARTRIDGE

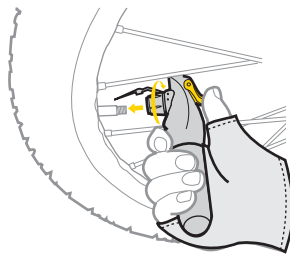
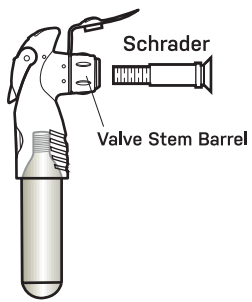


If CO₂ gas does not flow properly, further tighten the CO₂ cartridge until all threads are fully engaged inside the inflator head so that the CO₂ cartridge is punctured correctly.

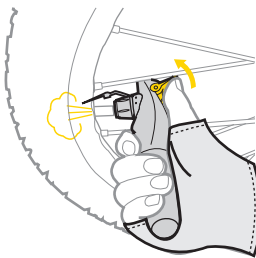
If using the CO₂ inflator continuously, make sure to wait 20 seconds in between cartridges for the rubber grommet inside the inflator head to return to its original position. Otherwise, a gas leak may occur and prevent proper inflation.

NOTE: MAKE SURE TO WEAR GLOVES AND INSTALL THE COVER ON THE CO2 CARTRIDGE BEFORE INFLATING TO AVOID INJURY.

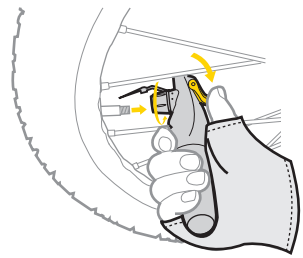
Screw on for Schrader



Attach and lock CO2-Bra CO2 Inflator onto Schrader valve stem by turning valve stem barrel clockwise.



Gas will flow when the CO2 regulator handle is lifted and will stop when the regulator handle is released.

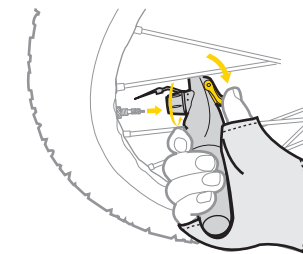
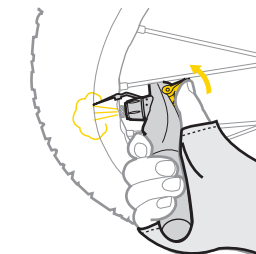
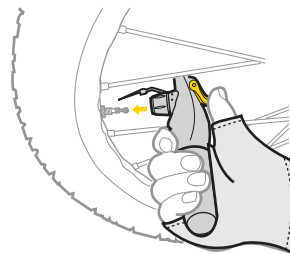
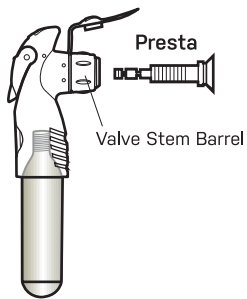


Flip CO2 regulator handle back down to the closed position. Remove CO2-Bra CO2 Inflator from Schrader valve stem by turning valve stem barrel counterclockwise.

NOTE:

The Valve Stem Barrel may become extremely cold/frosty when the CO2 gas is expelled. DO NOT try to unscrew the barrel until it has warmed sufficiently to touch and the CO2 regulator handle is released.

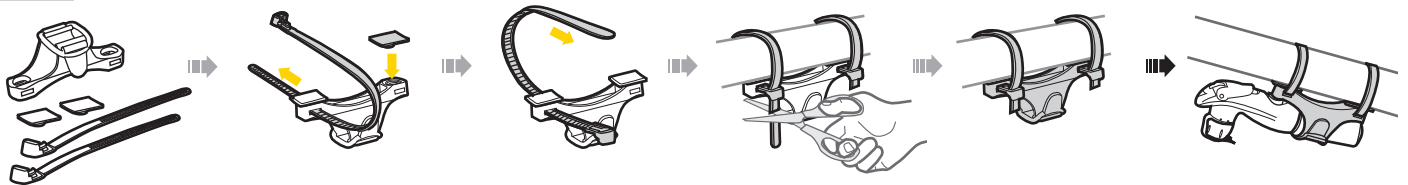
Push on and pull off for Presta valve



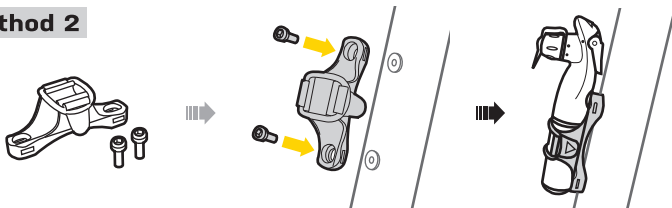
Flip CO2 regulator handle back down to the closed position. Remove CO2-Bra CO2 inflator from Presta valve stem by turning valve stem barrel counterclockwise.

HOW TO INSTALL CENTERLINE MOUNT BRACKET

Method 1



Method 2



WARNING

Make sure the safety ring is placed on the CO2 cartridge correctly when mounting CO2-BRA to bike.



WARNING

1. If using the CO2 inflator continuously, make sure to wait 20 seconds in between cartridges for the rubber grommet inside the inflator head to return to its original position. Otherwise, a gas leak may occur and prevent proper inflation.
2. Tighten the CO2 cartridge until all threads are engaged inside the inflator head before using CO2 inflation function. Failure to do so will cause improper operation and may cause injury.
3. DO NOT remove CO2 cartridge if it is still charged with gas. Completely discharge the CO2 cartridge before removal.
4. After each inflation, make sure all CO2 gas has been discharged by lifting the CO2 regulator handle several times.
5. When opening the CO2 cartridge, point the inflator head away from yourself and others.
6. For your safety, make sure CO2 regulator handle is always flipped down in the closed position when not in use.
7. DO NOT use CO2 Inflator if any part is cracked or broken.
8. DO NOT expose the CO2 cartridge to heat, or store at temperatures above 120°F (49°C), or store in enclosed vehicles.
9. Make sure to wear gloves and install the cover on the CO2 cartridge when inflating to avoid injury.
10. The Valve Stem Barrel may become extremely cold/frosty when the CO2 gas is expelled. DO NOT try to unscrew the barrel until it has warmed sufficiently to touch and the CO2 regulator handle is released.
11. Keep out of reach of children.

Optional Accessories



16g Threaded CO2 Cartridge (2 pieces)
Art no. TCOT-2



16g Threaded CO2 Cartridge (5 pieces w/one cover)
Art no. TCOT-6

WARRANTY

2-year Warranty: All mechanical components against manufacturer defects only.

Warranty Claim Requirements

To obtain warranty service, you must have your original sales receipt. Items returned without a sales receipt will assume that the warranty begins on the date of manufacture. All warranties will be void if the product is damaged due to user crash, abuse, system alteration, modification, or used in any way not intended as described in this manual.

* The specifications and design are subject to change without notice.

Topeak products are available only from professional bicycle shops.

Please contact your nearest Topeak authorized bicycle dealer for any questions.

For customers in the USA, call: 1-800-250-3068

Website: www.topeak.com

Copyright © Topeak, Inc.

M-TCBR-1-EN 2019-10